

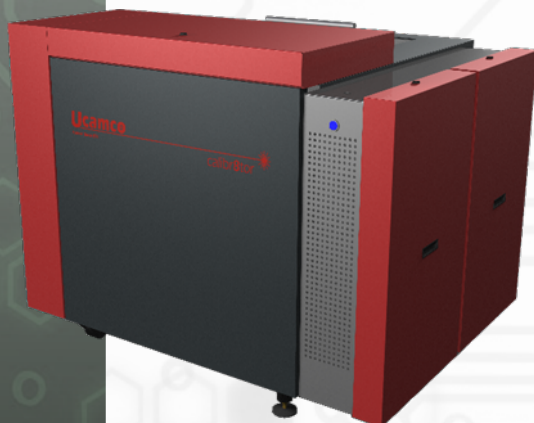
SOFTWARE

LASER PHOTO PLOTTERS

DIRECT IMAGERS

Calibr8tor 3000 & 3500

A family of Photo plotters targeted at your precise requirements



- Highest throughput of precision plots
- Resolutions from 4000 to 25,400 ppi
- Line widths down to 12.7 microns
- Unequalled accuracy
- Load up to 3 film magazines
- 100% automatic operation
- "Wheel-in" integration
- Unrivalled uptime record

MARKETS

Rigid PCB Mfr ✓
 Flex PCB Mfr ✓
 Flex-Rigid PCB Mfr ✓
 HDI PCB Mfr ✓
 PCB Masslam Mfr ✓
 PCB Equipment Mfr
 PCB Traders
 PCB Designers
 PCB Test Centers
 IC Packaging ✓
 Chemical Milling ✓
 High Resolution Graphic Arts ✓
 Flat Panel Display ✓

PRODUCT FAMILIES

CAM
 PreCAM and Engineering
 Electrical Test
 Equipment Front Ends
 Format Converters & RIP's
 OEM Software

Laser Photo Plotters ✓
 Direct Imagers

A new family of laser photo plotters targeted at your precise requirements

The new calibr8tor 3X00 delivers an unrivalled combination of plot throughput, image accuracy and operational flexibility. Designed for high-technology PCB fabricators, calibr8tor 3X00 offers plot resolutions from 4000 to 25400 ppi to tackle all plotting tasks from standard production to specialist applications with features down to 12.7 μm . calibr8tor 3X00 combines innovative plotting technology with ease of installation and operation, high uptime and low cost of ownership. Ucamco's new Geometric Correction System means that photo tools can be automatically compensated for linear and non-linear distortions introduced during board manufacture.

Lower whole-life costs

The calibr8tor 3X00 has been engineered to deliver the lowest whole-life costs. Data input in all standard plot formats make it a "wheel-in" replacement for any plotter. Automated plot queuing in all CAM environments and 3 magazines each holding 150 sheets of film cut labour and environmental costs. calibr8tor 3X00's robust wear-free construction based on over 25 years design experience is field-proven to deliver unrivalled uptime and extended operational life. calibr8tor 3X00 is backed by Ucamco's global support network and continuous development policy.

Maximum plots per hour

The calibr8tor 3X00 features Ucamco's new FlashRip, developed to process the large amounts of data needed for high-resolution plots. Combined with calibr8tor 3X00's high-speed film load and unload system, FlashRip delivers up to 40% more plots per hour.

Increased production yields

Measure the linear and non-linear process distortions found on panels during production. Enter the correction measurements into calibr8tor 3X00's Geometric Correction System and your photo tool will be precisely compensated accurate to 0.127 μm .

High-precision image accuracy

Dynamic beam control accurate to 0.1 μm and advanced pixel placement algorithms operating at 200,000 ppi deliver pin-sharp high-accuracy images at all resolutions. Ucamco's unique syntectic modulation eliminates the pixel-jump errors found on conventional plotters for ultra-precise lines and spaces down to 12.7 μm . Patented stress-free film handling eliminates film distortion during plotting for optimum image accuracy on the finished photo tools. Ucamco's Geometric Correction System (GCS) automatically corrects the photo tools to compensate for any distortions introduced by sources external to the photo plotter.

Calibr8tor 3000 & 3500

Technical Data

SOFTWARE

AutoCAM
FaultStation 4
FixGenius
FlashRip
Format Converters
Geometric Correction System
Integr8tor
Mult Job Panelizer
OEM Software
SmartAOI
SmartPlate
SmartTest
Ucam CAD Review
Ucam CAM++
Ucam Chemical Milling
Ucam ET+
Ucam SmartView
Ucam uFlex
UcamX

For more information on any of our products or services please contact us:

By e-mail: info@ucamco.com

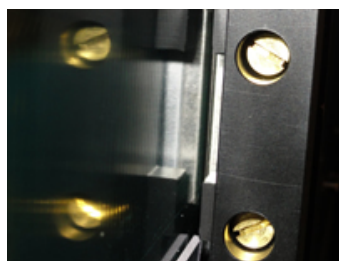
On the Web: www.ucamco.com

| Resolutions | Imperial | Metrical |
|---|---|------------------------|
| Imperial | 4,000 up to 25,000 ppi | |
| Metric | 6.25 up to 1 μ m | |
| Minimum line width | 0.5 mil | 12.7 μ m |
| Productivity for an 18" x 24" exposed panel (*) | Model 3000 | Model 3500 |
| 4,000 ppi (in films / hour) | 31.9 | 34.1 |
| 5,080 ppi (in films / hour) | 28.9 | 31.2 |
| 8,000 ppi (in films / hour) | 23.1 | 25.5 |
| 10,160 ppi (in films / hour) | 20.1 | 22.4 |
| 12,700 ppi (in films / hour) | 17.5 | 19.6 |
| 16,000 ppi (in films / hour) | 14.9 | 16.9 |
| 20,000 ppi (in films / hour) | 11.6 | 14.5 |
| 25,400 ppi (in films / hour) | 8.0 | 12.1 |
| Film Requirements | Imperial | Metrical |
| Film format along the drum | 18" – 32" in ½" steps | 457 – 813 mm |
| Film format around the drum | 24" – 29" in 1" steps | 610 – 736 mm |
| Max. image format along the drum | 0.2" (5 mm) less than film format | |
| Max. image format around the drum | 0.9" (23 mm) less than film format | |
| Sheet tolerance | \pm 0.02" | |
| Accuracy | Imperial | Metrical |
| Geometric plotter accuracy | < 0.16 mil | < 4 μ m |
| Geometric plotter repeatability | < 0.08 mil | < 2 μ m |
| Global positioning accuracy | 0.01 mil | 0.25 μ m |
| Geometric film accuracy - 3 σ , FTF radial | < 0.4 mil | < 10 μ m |
| Geometric film repeatability | < 0.4 mil | < 10 μ m |
| Line width variation | < 0.08 mil | < 2 μ m |
| Scaling adjustments in steps of | 0.005 mil | 0.127 μ m |
| Scaling adjustment range | \pm 5% | |
| Machine Characteristics | Imperial | Metrical |
| Loading capacity | Up to 3 magazines. 150 sheets of film in each | |
| Light source | Red HeNe laser, 632.8 nm, 5 mW | |
| Dimensions (W x D x H) | 72.8" x 61" x 54.3" | 1850 x 1550 x 1380 mm |
| Weight | 3300 lbs | 1500 kg |
| Room temperature during operation | 70° F \pm 2° | 21° C \pm 1° |
| Relative humidity during operation | 50% \pm 2%, no condensation | |
| Relative humidity rate of change | Max 6% per hour | |
| Electrical Power Supply | 2 x 230 VAC, 2000 VA | |
| Heat dissipation | 2,000 W (1,725 kcal/h) | |
| Compressed air supply | 87 – 145 PSI | 6 – 10 bar |
| Compressed air quality | Free of oil and water | 0.01 mg/m ³ |
| Compressed air volume | 88 ft ³ /hour | 2500 l/hour |

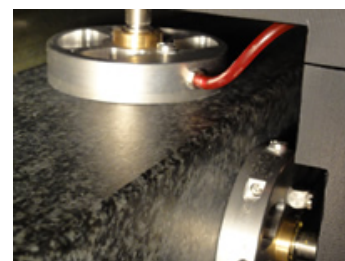
(*) Assuming nominal plotting using factory settings



Linear scale



Linear motor



Air bearings

Ucamco NV
Bijenstraat 19, 9051 Gent, Belgium
Tel: +32 9 216 99 00 - Fax: +32 9 216 99 12
E-mail: info@ucamco.com - Web: www.ucamco.com

©All rights reserved. Duplication in any form is prohibited. Content information may change without notice